

SECTION 5, T.6N., R.1W., S.L.B. & M.

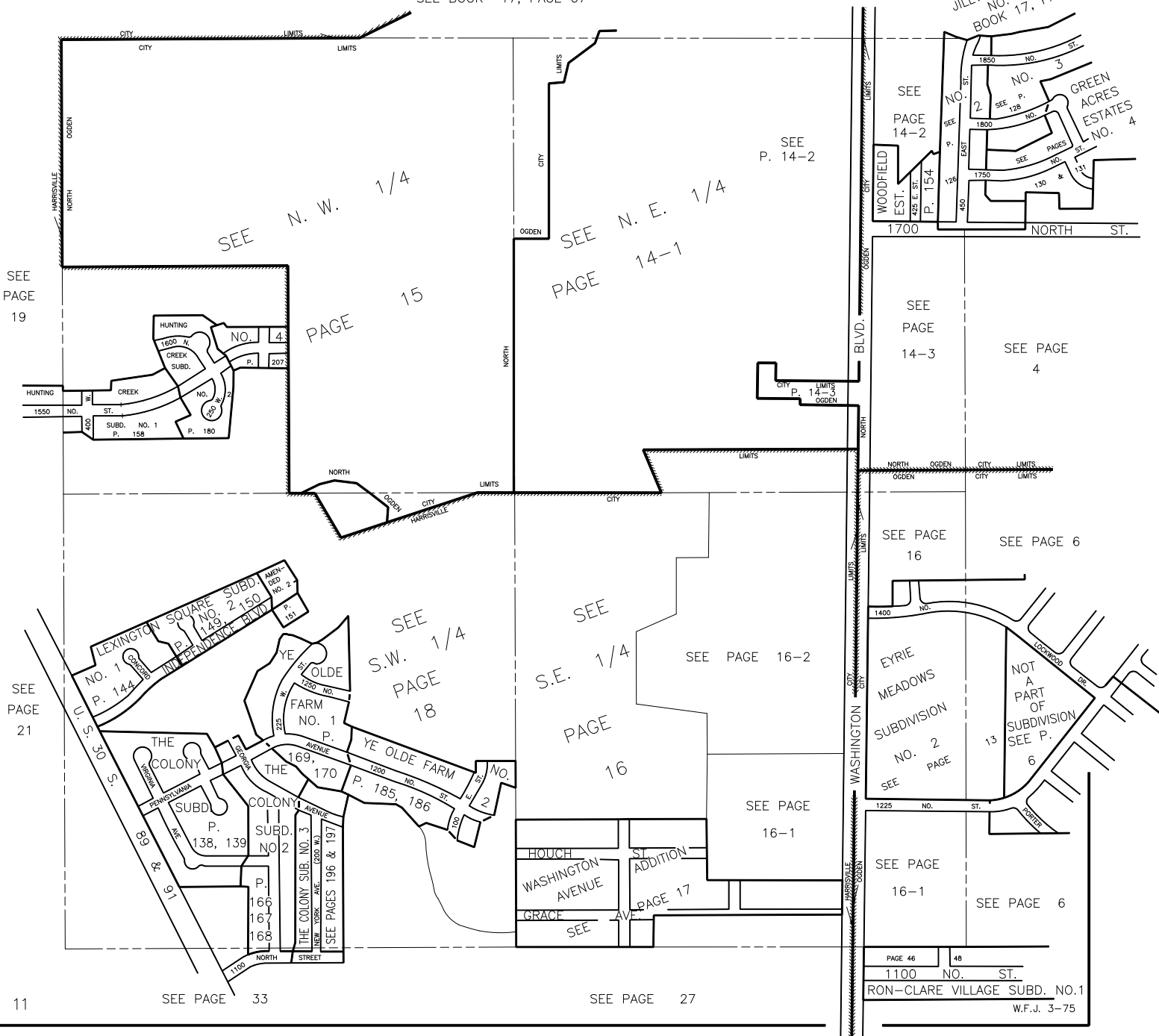
IN OGDEN CITY, NORTH OGDEN CITY, TOWN OF HARRISVILLE & NORTH OGDEN DISTRICT

SCALE 1" = 400'

PREFIX: 11-014

SEE BOOK 17, PAGE 67

ALSO SEE PAGES 14-1, 2, 3



SEE PAGE 19

SEE PAGE 21

11

SEE PAGE 33

SEE PAGE 27

PAGE 46	48
1100 NO. ST.	
RON-CLARE VILLAGE SUBD. NO.1	
W.F.J. 3-75	